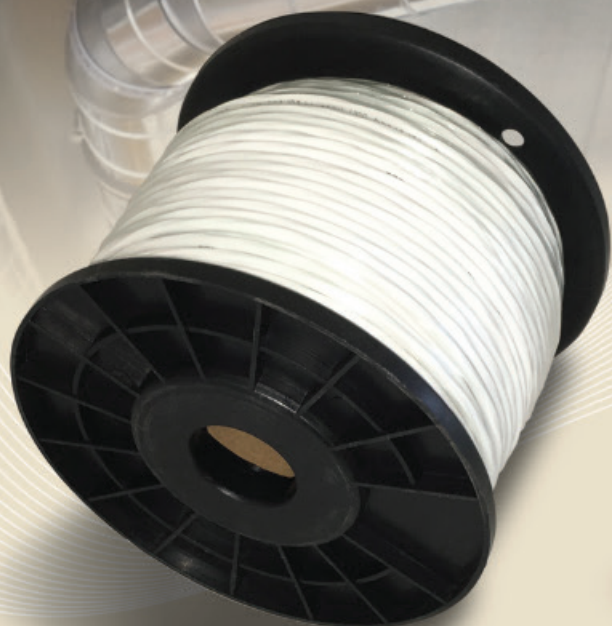


# HVAC Products





## 18 and 20 Awg Thermostat Cable

**Construction:** A solid soft drawn copper conductor.

**Insulation:** A heat and moisture resistant colored polyvinyl chloride PVC insulation.

**Jacket:** An outer jacket of polyvinyl chloride PVC, which is heat, moisture and sunlight resistant.

**Standards:** UL 13, CL2

### 18 Awg PVC Thermostat Cable

Part Number	Gauge / Conductor	Spool Weight Lbs.	Spool Length	Std Pack*
Therm18-2C/..	18-2c	8	1 x 500'	4 spools
Therm18-3C/..	18-3c	11	1 x 500'	4 spools
Therm18-4C/..	18-4c	7	1 x 250'	4 spools
Therm18-5C/..	18-5c	9	1 x 250'	4 spools
Therm18-6C/..	18-6c	10	1 x 250'	4 spools
Therm18-7C/..	18-7c	11	1 x 250'	4 spools
Therm18-8C/..	18-8c	13	1 x 250'	4 spools
Therm18-10C/..	18-10c	16	1 x 250'	4 spools
Therm18-12C/..	18-12c	19	1 x 250'	4 spools

\*\* Jacket Color: BR = Brown WH = White

18ga 2-10c available in bags

### 20 Awg PVC Thermostat Cable

Part Number	Gauge / Conductor	Spool Weight Lbs.	Spool Length	Std Pack*
Therm20-2C/..	20-2c	6	1 x 500'	4 spools
Therm20-3C/..	20-3c	8	1 x 500'	4 spools
Therm20-4C/..	20-4c	5	1 x 250'	4 spools
Therm20-5C/..	20-5c	6	1 x 250'	4 spools
Therm20-6C/..	20-6c	7	1 x 250'	4 spools
Therm20-7C/..	20-7c	8	1 x 250'	4 spools
Therm20-8C/..	20-8c	9	1 x 250'	4 spools
Therm20-10C/..	20-10c	11	1 x 250'	4 spools
Therm20-12C/..	20-12c	12	1 x 250'	4 spools

\*\* Jacket Color: BR = Brown WH = White

## 18 Awg Plenum Thermostat Cable

**Construction:** A solid soft drawn copper conductor.

**Insulation:** A heat and moisture resistant colored low smoke polyvinyl chloride PVC insulation.

**Jacket:** An outer jacket of low smoke polyvinyl chloride PVC, which is heat and moisture resistant.

**Standards:** UL 13, CL2P, UL 1581, NEC Article 725

### 18 Awg Plenum Thermostat Cable

Part Number White	Gauge / Conductor	Spool Weight Lbs.	Spool Length	Std Pack*
THE18-2C/WHPLEN	18-2c	8	1 x 500'	4 spools
THE18-3C/WHPLEN	18-3c	11	1 x 500'	4 spools
THE18-4C/WHPLEN	18-4c	9	1 x 250'	4 spools
THE18-5C/WHPLEN	18-5c	10	1 x 250'	4 spools
THE18-6C/WHPLEN	18-6c	12	1 x 250'	4 spools
THE18-8C/WHPLEN	18-8c	13	1 x 250'	4 spools



## Mini-Split

**Construction:** Soft bare annealed copper with Class B stranding.

**Insulation:** Heat and moisture resistant Polyvinylchloride (PVC) per UL 62. Clear Polyamide (Nylon) jacket.

**Jacket:** Sunlight resistant black PVC rated 90°C per UL 1277.

**Approvals:** UL 1277, IEEE 383 70,000 BTU vertical tray flame test

MINI-SPLIT			
Part Number	Description	Spool Weight Lbs.	Spool Length Ft.
14-04TC-VN	14/4 Str BC UL Type TC / TC-ER	30	250'
14-04TC-VN	14/4 Str BC UL Type TC / TC-ER	13	100'
14-04TC-VN	14/4 Str BC UL Type TC / TC-ER	6	50'
14-07TC-VN	14/7 Str BC UL Type TC / TC-ER	48	250'
16-04TC-VN-SHD	16-/4 Str BC Shielded UL Type TC / TC-ER	30	250'

## MC Cable

**Construction:** Compact or compressed, solid or stranded, soft drawn bare copper conductor.

**Insulation:** Moisture and flame resistant cross linked polyethylene XLPE XHHW-2 insulation.

**Aarmor:** Overall aluminum interlocked armor.

**Approvals:** UL 44, 1569, 1581, and 1685, UL listed 600V at 90C Dry/75C Wet, FT4, IEEE 1202 flame test. Meets NEC articles 230-43, 300-22, 321, 334, 518, 520 and 530 for installation rated Fire Wall Penetration to 600V 90C.

METAL CLAD MINI-SPLIT			
Part Number	Description	Spool Weight Lbs.	Coil Length Ft.
14-02MCA/250CL	14/2 SOL WG THHN MC	22	250'
14-03MCA/250CL	14/3 SOL WG THHN MC	35	250'
12-02MCA/250CL	12/2 SOL WG THHN MC	30	250'
12-03MCA/250CL	12/3 SOL WG THHN MC	47	250'
12-02MCA/STR/250CL	12/2 STR WG THHN MC	30	250'
12-03MCA/STR/250CL	12/3 STR WG THHN MC	47	250'

## Low Voltage Shielded Cables

**Construction:** Stranded soft drawn bare copper conductor.

**Insulation:** Color coded polyvinyl chloride PVC insulation.

**Jacket:** Gray polyvinyl chloride PVC jacket.

**Approvals:** CL3R, NEC Article 725, 760, 800.

LOW VOLTAGE MINI-SPLIT / ELECTRONIC CABLES			
Part Number	Description	Spool Weight Lbs.	Spool Length Ft.
18-02STR-BSC-SH	18/2 Str BC Shld PVC CL3R	14	500
18-03STR-BSC-SH	18/3 Str BC Shld PVC CL3R	20	500
18-04STR-BSC-SH	18/4 Str BC Shld PVC CL3R	26	500
18-06STR-BSC-SH	18/6 Str BC Shld PVC CL3R	36	500
18-08STR-BSC-SH	18/8 Str BC Shld PVC CL3R	47	500

COMMUNICATIONS CABLES			
Part Number	Description	Box Weight Lbs.	Pull Out Box Ft.
TEL24-4PC5E350-CM	24/4 pair Cat 5e 350 CM PVC	26	1,000
RG6/U60%1000CTN	RG6/U 60% Al Braid Shld Coax	30	1,000

\* NOTE: We will break standard packaging. Contact PWC Sales for information.

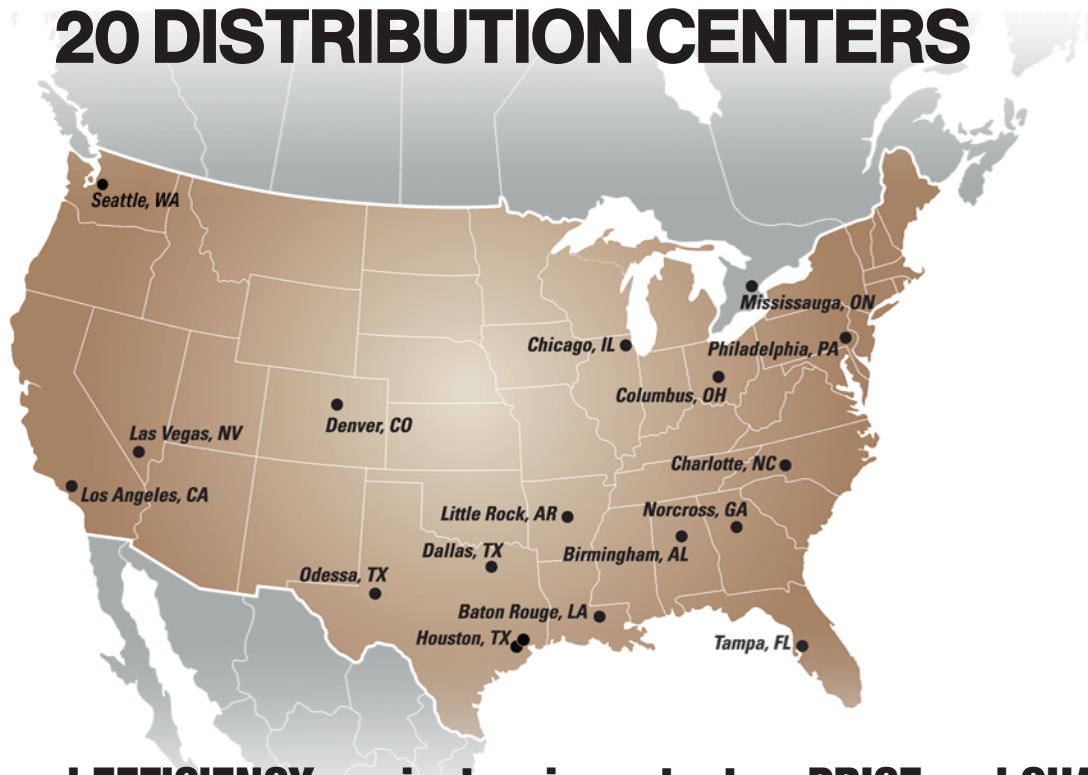
# Cords

Appliance Cords		
Description	Std Pack*	Part Number
14-03c 15amp SPT3 3ft	28	C03531
14-03c 15amp SPT3 6ft	28	C03532
12-03c 20amp SPT3 9ft	28	C03537

Power Supply Cords		
Description	Std Pack*	Part Number
16-03c SPT 3ft	50	C09733
16-03c SPT 6ft	50	C09736
16-03c SPT 6ft Rt Ang	50	C09726
16-03c SJTW 3ft	50	C09703
16-03c SJTW 6ft	50	C09706
16-03c SJTW 9ft	50	C09709
14-03c SJTW 6ft	50	C09716
14-03c SJTW 9ft	50	C09719
12-03c 20A SPT 6' Ang Plug		C09870-12/3-125V
12-03c 20A SPT 6' Ang Plug		C09870-12/3-250V
14-03c 15A SPT 6' Ang Plug		C09870-14/3-250V

Extension Cords		
Description	Std Pack*	Part Number
16-03c SJTW 25ft Yel Lighted Single End	16	C02307-LE
16-03c SJTW 50ft Yel Lighted Single End	12	C02308-LE
16-03c SJTW 100ft Yel Lighted Single End	6	C02309-LE
14-03c SJTW 25ft Yel Lighted Single End	16	C02407-LE
14-03c SJTW 50ft Yel Lighted Single End	6	C02408-LE
14-03c SJTW 100ft Yel Lighted Single End	3	C02409-LE
12-03c SJTW 25ft Yel Lighted Single End	12	C02587-LE
12-03c SJTW 50ft Yel Lighted Single End	4	C02588-LE
12-03c SJTW 100ft Yel Lighted Single End	2	C02589-LE
12-03c SJTW 25ft Yel Lighted Triple End	12	C02587-LE-TT
12-03c SJTW 50ft Yel Lighted Triple End	4	C02588-LE-TT
12-03c SJTW 100ft Yel Lighted Triple End	2	C02589-LE-TT
12-03c SJEOW 2ft Tri Tap Yellow	12	C03482-J
12-03c SJTW 2ft Inline GFCI Tri Tap BLK/YEL	6	C02841

## 20 DISTRIBUTION CENTERS



When **TIME** and **EFFICIENCY** are just as important as **PRICE** and **QUALITY**...

We make your business our **PRIORITY**



US: 1-800-945-5542 CANADA: 1-877-611-5122

**WWW.PRIORITYWIRE.COM**